



**SAINTS  
GERVAIS**  
MONT-BLANC

WINTER 2024-25



# PRESS PACK

**SAINT-GERVAIS OPTS FOR INNOVATIVE TRANSPORT SOLUTIONS**  
3 new ski lifts promote low-carbon mobility



**MONT-BLANC**  
4810 M

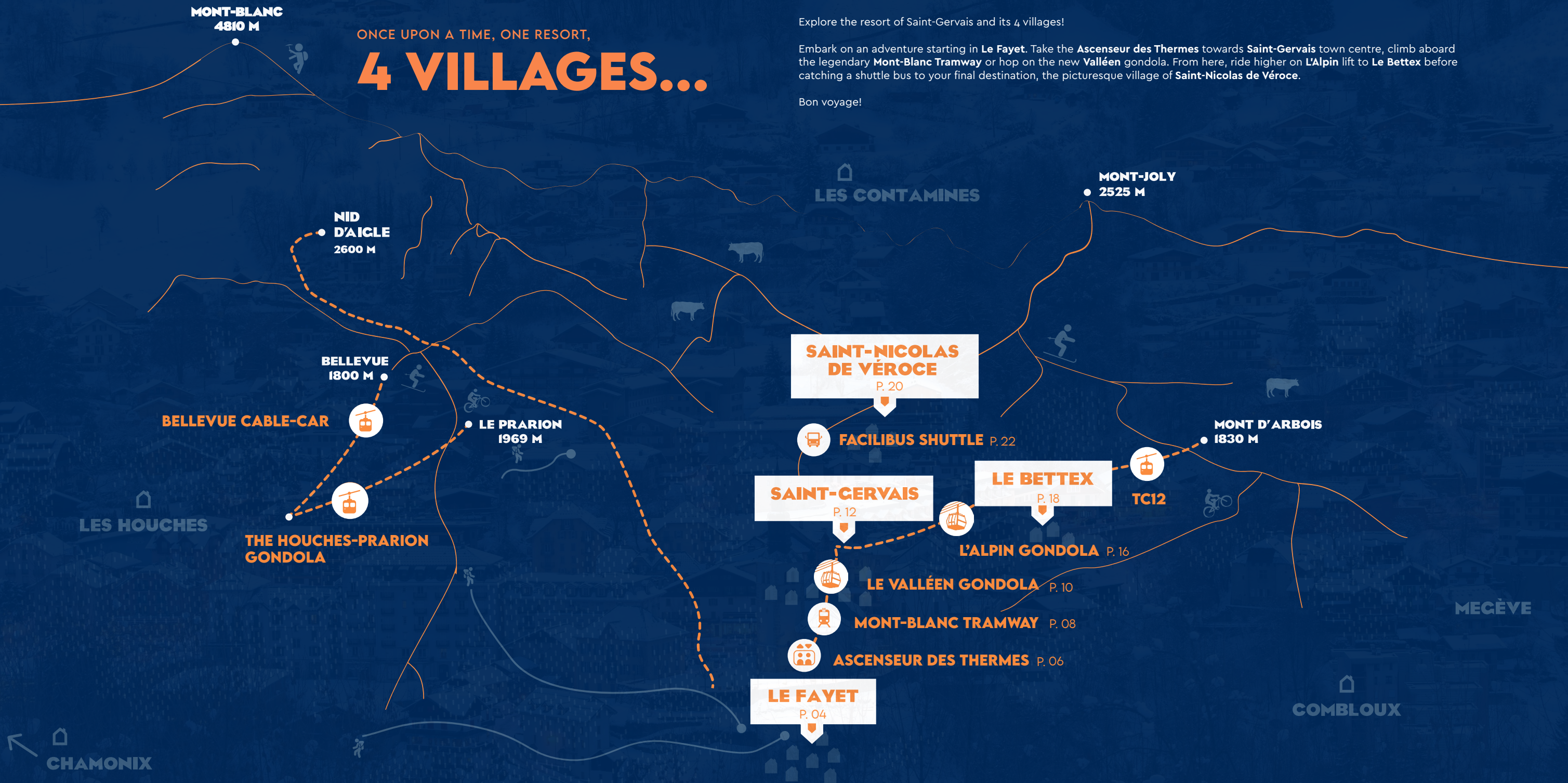
ONCE UPON A TIME, ONE RESORT,

# 4 VILLAGES...

Explore the resort of Saint-Gervais and its 4 villages!

Embark on an adventure starting in **Le Fayet**. Take the **Ascenseur des Thermes** towards **Saint-Gervais** town centre, climb aboard the legendary **Mont-Blanc Tramway** or hop on the new **Valléen** gondola. From here, ride higher on **L'Alpin** lift to **Le Bettex** before catching a shuttle bus to your final destination, the picturesque village of **Saint-Nicolas de Véroce**.

Bon voyage!



LES CONTAMINES

**MONT-JOLY**  
● 2525 M

**NID D'AIGLE**  
● 2600 M

**SAINT-NICOLAS DE VÉROCE**  
P. 20

**BELLEVUE**  
1800 M ●

**FACILIBUS SHUTTLE** P. 22

**BELLEVUE CABLE-CAR**

● **LE PRARION**  
1969 M

**LE BETTEX**  
P. 18

**MONT D'ARBOIS**  
● 1830 M

**SAINT-GERVAIS**  
P. 12

**TC12**

**L'ALPIN GONDOLA** P. 16

**THE HOUCHES-PRARION GONDOLA**

**LE VALLÉEN GONDOLA** P. 10

**MONT-BLANC TRAMWAY** P. 08

**ASCENSEUR DES THERMES** P. 06

**LE FAYET**  
P. 04

LES HOUCHES

MEGÈVE

COMBLOUX

← CHAMONIX





A stop in

# LE FAYET

marks the start of your adventure

## LE FAYET, THE PROMISE OF A BRIGHT FUTURE!

Coming soon...a new eco-friendly car park. Located in Le Fayet, a new car parking facility, equipped with 3,000 m<sup>2</sup> of photovoltaic panels, is designed to produce approximately 800 Mwh of energy per annum whilst providing a shady parking option for residents and visitors alike! Also available on site:

- Charging points for electric vehicles.
- A car-share scheme run by the local authorities, operational from December onwards.

First stop on your new adventure!



FOR MORE INFORMATION, CLICK HERE

### LE TOPO: THE CLIMB STARTS HERE!

**A paradise for climbing fans at the heart of the mountains!** For thrill seekers and budding rock climbers, Le Topo - with its 6 climbing halls and 2,000 m<sup>2</sup> of climbing routes, is THE place to be.

An adventure every time you visit, this indoor climbing complex boasts colourful walls and a variety of holds and routes to suit all levels, **from novice to expert.**

Looking to test your limits, rise to the challenge or **simply relax and enjoy**, Le Topo is the ideal venue for a day of climbing in a fun and friendly atmosphere! Visitors can also opt to chill with a drink or a bite to eat at the Topo Bistro.

NEW

### FROM PLAN A, STRAIGHT TO PLAN B!

This coming winter, **PlanB Living Saint-Gervais** opens its doors in Le Fayet. The establishment proposes a **variety of accommodation options**, including 36 rooms, a dormitory and an XL room designed for larger groups.

Guests can also enjoy a **generous and appetizing selection of food** at the restaurant and an assortment of intriguing beverages from the bar. The guarantee of a fun and friendly experience.



## A WELLNESS EXPERIENCE, UNIQUE IN ITS KIND!

Nestled in the heart of the mountains, the Saint-Gervais Mont Blanc Thermal Baths boast a naturally warm and **soothing spring water source** – the promise of a relaxing wellness experience.

A range of facilities, open daytime and evening, include saunas, steam baths, indoor and outdoor pools. **The perfect place to relax** and unwind after a hard day on the slopes.



PREVIEW

### THIS WINTER, THE SAINT-GERVAIS MONT-BLANC THERMAL BATHS BOAST A HOST OF ADVANTAGES



A new elevator, **the Ascenseur des Thermes**, now links the thermal baths to Saint-Gervais town centre, making **travelling easier** for both patients and pedestrians.



On the medical front, **morning discovery sessions** have been extended to include **ENT/respiratory tract** in addition to dermatology. The perfect opportunity for visitors to experience hydrotherapeutic spa treatments. On reservation, Wednesday to Saturday.



To enhance your experience, the baths boast a new relaxation area equipped with a water mattress for a **floating massage** at 37°C. A new package inclusive of entry to the thermal baths, a mud wrap and a floating massage, is ideal **for sporty visitors** in quest of optimum recovery.

FOR MORE INFORMATION, CLICK HERE



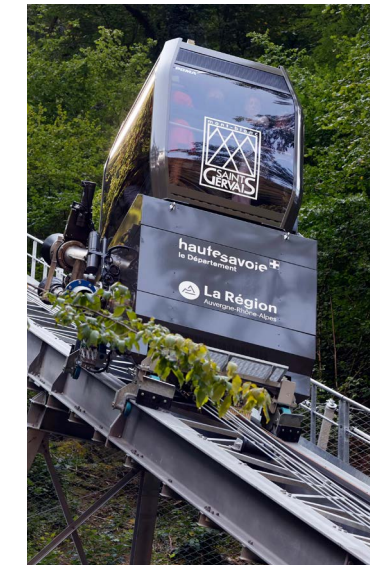
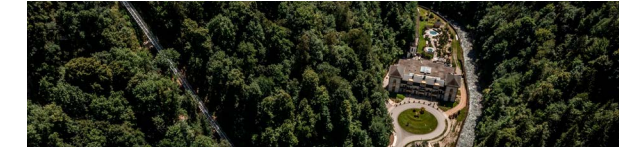


Take the new elevator, the Ascenseur des Thermes, from the park in Le Fayet to the centre of Saint-Gervais



## THE ASCENSEUR DES THERMES AN ECO-FRIENDLY TRANSPORT SOLUTION

Since August 2024, the **Ascenseur des Thermes** links the Parc Thermal in Le Fayet to the centre of Saint-Gervais in just 3 minutes. Bridging the gap between Le Fayet and Saint-Gervais, **this new facility improves daily travel** for residents, visitors to the spa and sports enthusiasts whilst actively encouraging interaction between residents of both villages. An eco-friendly alternative to traditional transport, free of charge!



The Ascenseur des Thermes is **the first inclined lift in France to adopt wastewater technology**, placing it at the forefront of sustainable mobility – a combination of tradition and modernity for a greener future. This innovative, low-cost system is modelled on techniques developed by the British engineer, the late Michael Farmer.

**An ingenious hydraulic system** enables the lift to descend under the weight of wastewater, stored in a ballast tank beneath the cabin. The electricity generated on the downhill run is then used to power the lift back uphill. This process, inspired by ancient funicular railways, enables **the safe transport of passengers**, boasts longer opening hours than conventional public transport and requires no on-site staff. Open from 6.00 am to 11.00 pm.

- ↔ **262 metres**
- ↗ **178 metres**
- ∟ **43°**
- ⌚ **4m/s**
- 👥 **16 passagers**

📍 OFFICIAL OPENING **3<sup>RD</sup> AUGUST 2024**



The project is part of **ongoing efforts to reduce the carbon footprint**. The use of wastewater as a ballast results in pollution-free green transport. The Ascenseur des Thermes marks a new page in the history of Saint-Gervais, symbolising the resort's commitment to improving public transport whilst minimising its environmental impact and creating a new sense of unity among residents of the different villages.



## THE MONT-BLANC TRAMWAY A SUSTAINABLE RAILWAY



The retro charm of the Mont-Blanc Tramway, combined with the splendour of alpine surroundings, is the promise of a **timeless adventure**. Departing from Le Fayet at an altitude of 580 metres, in winter the tramway carries passengers towards the terminus in Bellevue, at 1,800 metres altitude.

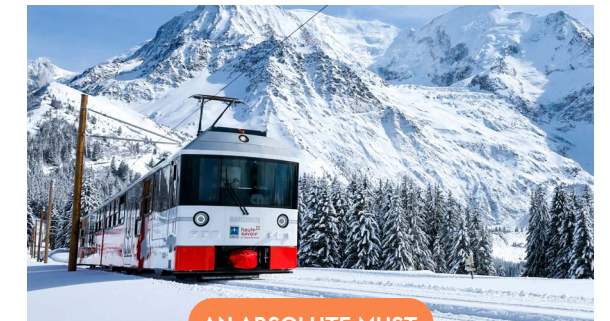
Running since 1909, the Mont-Blanc Tramway is **the highest rack and pinion railway in France**. Originally designed to carry passengers to the summit of Mont-Blanc, technical challenges and the vagaries of history decided otherwise. Today, in the summer months, the tramway remains an essential means of transport for mountaineers who aspire to climb the summit of Mont-Blanc from the Nid Aigle and for tourists who wish to admire the majesty of the mountains in complete safety.

The new generation tramway reaches a top speed of 20 km/h compared to 15 km/h for its predecessor, thus reducing journey times. **It operates in winter and summer**, boasting 4 to 6 departures per day between mid-December and mid-April. Accessible to all, **including passengers with reduced mobility**, the Mont-Blanc Tramway boasts competitive fares for children, families and groups of 20 or more.

4 different engines:



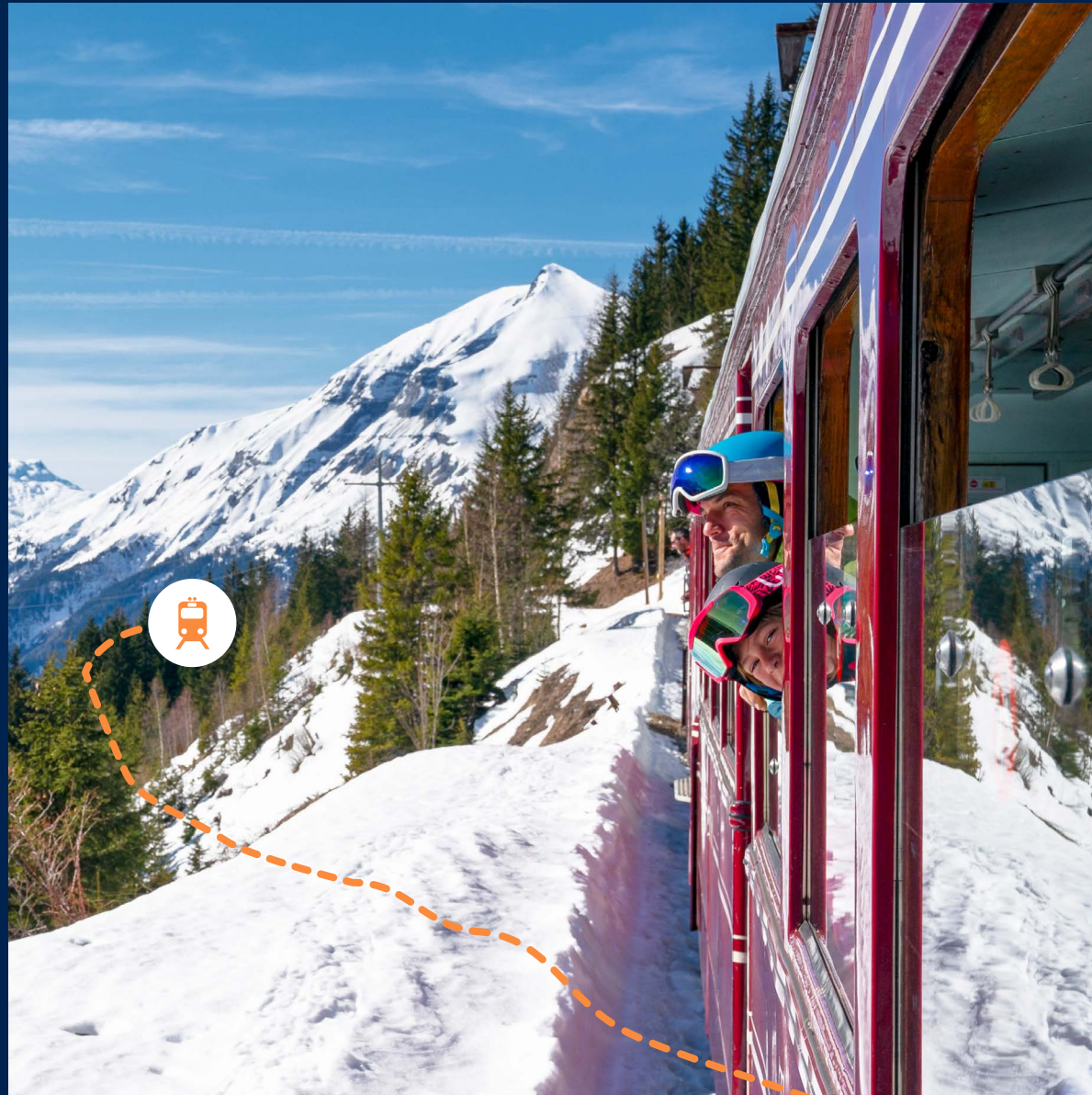
carry skiers towards Les Houches ski area during the winter months.



AN ABSOLUTE MUST

FOR MORE INFORMATION, CLICK HERE

Boarding the Mont-Blanc Tramway represents the choice of **eco-friendly transport** and the guarantee of a memorable journey in the heart of the Alps. **The fully electric trains and the downhill recharging system** minimise energy consumption and offer a **greener** alternative to visitors in their quest to enjoy and preserve the beauty of the high mountains.



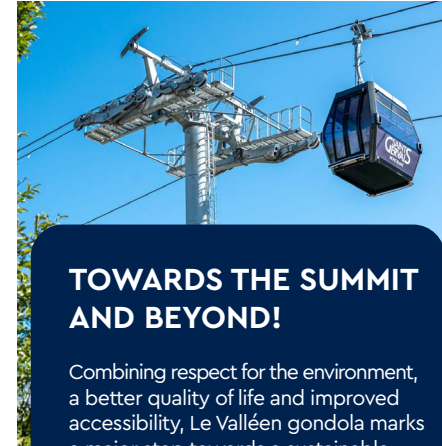
Escape up the mountain  
aboard the Mont-Blanc Tramway...



Ride Le Valléen gondola  
to discover Saint-Gervais



## LE VALLÉEN A NEW ERA FOR MOBILITY!



### TOWARDS THE SUMMIT AND BEYOND!

Combining respect for the environment, a better quality of life and improved accessibility, Le Valléen gondola marks a major step towards a sustainable and exemplary future for mobility in the mountains.

Early September 2024, Saint-Gervais took a decisive step in its commitment to eco-mobility with the official opening of a new, **eco-friendly urban gondola lift, Le Valléen**. The new lift, which provides a direct link between the SNCF train station and the village of Saint-Gervais, offers visitors and residents a **year-round** sustainable transport solution, everyday from 7.00 am to 8.30 pm.

This new alternative to the car is expected to **solve traffic congestion on local roads**, reducing daily road traffic by 25% and the number of cars parked in Saint-Gervais by 15,000 per annum.

Le Valléen gondola is the promise of easier access to resort and **simple, more pleasant daily commutes!** Whether for schoolchildren, employees, the elderly or tourists, **this new form of public transport is designed to meet the needs of all age groups** whilst significantly reducing travel time in comparison to the equivalent car journey.

The new facility improves year-round access to tourist activities and the ski area, contributing to the attractiveness of the resort whilst helping to **preserve its natural charm**.

With an expected  
**12 to 15 %  
reduction in CO2 emissions**  
in this zone, Le Valléen gondola – part of a programme for sustainable development - will also improve **the quality of life for both residents and visitors.**

 **1,200**  
Passengers / hour

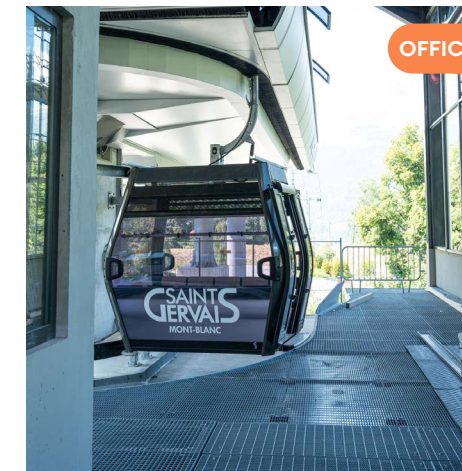
 **250,000**  
Rotations per annum

 **5 minutes**  
Approximate journey time for 221 metres elevation

 **586 metres**  
Lower station

 **807 metres**  
Upper station

 **1,850 metres**  
Length of lift



# Le Valléen





Take a tasty break in

# SAINT-GERVAIS

NEW 

## CASA NOSTRA

A new restaurant in Saint-Gervais, **Casa Nostra** proposes a **culinary journey across Italy**. Choose from a variety of pizzas, including their famous calzone, or book a private room for a fun aperitif dinner (maximum 12 people). Buon appetito !



NEW 

## THREE'S A CROWD

3 hotels, **Le Val d'Este, La Féline Blanche and Le Cœur des Neiges**, have joined forces to propose a new accommodation experience in the very centre of Saint-Gervais. Boasting a total of 43 rooms and a variety of bespoke services, **the iconic trio** hope to boost the conference trade at the foot of the Mont -Blanc!

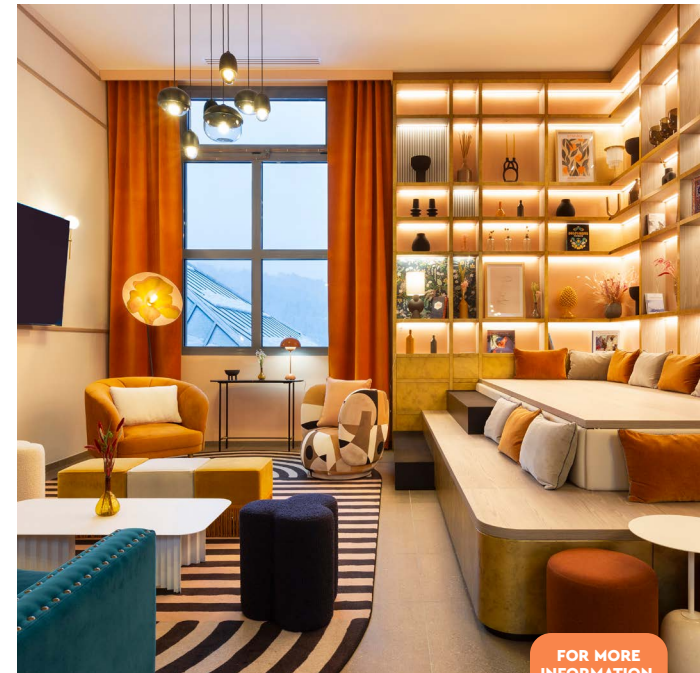
FOR MORE INFORMATION, [CLICK HERE](#)

FROM 25<sup>TH</sup> DECEMBER 2024 TO 1<sup>ST</sup> JANUARY 2025 

## AN ABSOLUTE MUST THIS COMING WINTER!

The annual light festival, Les Lumières de Saint-Gervais Mont-Blanc, is a **magical celebration** when winter and the beauty of the mountains take centre stage. A combination of **spectacular illuminations, enchanting entertainment** and memorable moments.

FOR MORE INFORMATION, [CLICK HERE](#)



FOR MORE INFORMATION, [CLICK HERE](#)



## A BESPOKE WELCOME AT THE FOOT OF-MONT BLANC

Located a stone's throw from the tramway station in Saint-Gervais, **the hotel Le Saint Gervais** boasts 4-star facilities. This historic former residence is also home to the mediterranean restaurant Avanti, the Marie Paradis cocktail bar and a relaxing spa - a perfect combination after a day on the ski slopes! This winter, guests who choose to stay 2 or more nights will receive a free return ticket for the Mont-Blanc Tramway!





## ADVENTURE A LITTLE HIGHER TO DISCOVER 2 DIFFERENT SKI AREAS!

**SAINT GERVAIS** Domaine Skiable

The **Évasion Mont-Blanc** ski area is a fabulous adventure playground for all ski lovers!



The **LHSG** ski area boasts magnificent 360° panoramic views of the Mont-Blanc range!



**55 km** of ski slopes, for all-day fun.



From **1,000 m to 1,900 m** altitude, with spectacular views.



**15** ski lifts towards the summits.



**280 m<sup>3</sup>/h** of artificial snow, for perfect snow cover, both in quantity and quality!



Partial opening: 07/12/2024

Full opening: 21/12/2024

Partial closure: 28/03/2025

Complete closure: 06/04/2025

Bonus: access to **the Mont-Blanc Tramway** included in the **LHSG ski pass**. An area that promises memorable experiences for all winter sports enthusiasts!



FOR MORE INFORMATION, CLICK HERE

## MEMORABLE SKIING ADVENTURES!

Looking to have fun with the kids this winter? Our ski lessons for children aged **3 to 12** are just the job!

- 🕒 **Children's group** lessons for all levels, on weekends, outside school holiday periods: from 11.00 am to 1.00 pm (low season).
- 🕒 **Individual lessons**, on weekends, outside school holiday periods: from 9.00 am to 11.00 am. Package inclusive of thermal baths and lift pass at a preferential rate.

FOR MORE INFORMATION, CLICK HERE



## TAKE A TRIP BACK IN TIME AND DISCOVER THE HISTORY OF MOUNTAINEERING



The local strong house, **La Maison Forte de Hautetour**, boasts a **permanent exhibition** on the history of local mountain guides and the ascension of Mont-Blanc.

- 🕒 Open year-round, from Tuesday to Thursday, 2.00 pm to 6.00 pm and on Fridays during the school holidays.

### CONTEMPORARY EXHIBITIONS BY RESIDENT ARTISTS ADD A TOUCH OF MODERNITY TO THE VENUE!

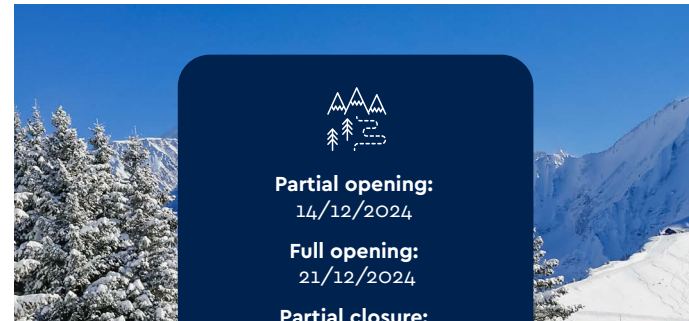
- 1.** October 2024 to February 2025: Research and creation - resident artist, Eva Pelzer.
- 2.** Winter 2025: Creative writing - resident author and poet, Laurence Nobécourt.
- 3.** From 20<sup>th</sup> December 2024 to 11<sup>th</sup> May 2025: Exhibition - 'Façonner le monde, vision d'ingénieurs photographe en montagne'.



## A CULTURAL MUST SEE

Located in the former church presbytery in Saint-Gervais, the cultural centre "**La Cure**" promotes local heritage with a **modern twist!** Discover stained glass by Father Kim En Joong, alpine inspired artwork and the history of our mountain valleys in the alpine library.

- 🕒 Open Tuesday to Friday, from 10.00 am to 12.30 pm and 2.00 pm to 6.00 pm. Open Saturday, from 2.00 pm to 6.00 pm by prior arrangement.



Partial opening: 14/12/2024

Full opening: 21/12/2024

Partial closure: 30/03/2025

Complete closure: 06/04/2025



**400 km** of ski slopes, running in all directions.



From **1,150 m to 2,353 m** altitude, to vary the pleasure.



**110** ski lifts from one summit to the next.



**1,022** snowmakers for perfect conditions all season long.

This winter marks the opening of 2 brand new gondola lifts, **Le Valléen** and **L'Alpin**, improving mobility in resort by offering easier access to the ski slopes. Browse the [saintgervais.ski](http://saintgervais.ski) website for live information on slope conditions. A skier's best friend!



FOR MORE INFORMATION, CLICK HERE



## L'ALPIN GATEWAY TO THE ÉVASION MONT-BLANC SKI AREA



Explore higher on L'Alpin gondola



The history of the ski lifts in Saint-Gervais dates back more than **9 decades**. In the 1930s, to meet the growing popularity of winter sports, the first cable-car was built to link the village centre with Le Bettex. In 1984, it was replaced by a new generation lift: the DMC. This double monicable boasted 16 cabins and a passenger capacity of up to 960 people per hour. After 40 years of faithful service, the DMC has now been **replaced by L'Alpin, a gondola lift designed to transport up to 2,800 people per hour**. But what remains of the DMC? Part of the upper station and the memories of several generations of keen skiers!

### PARIS-SAINT-GERVAIS ON SKIS? GAMBLE TAKEN, CHALLENGE MET!

Le Valléen gondola is directly linked to the new Alpin lift. Visitors arriving at the SNCF train station in Saint-Gervais Le Fayet can now access the foot of the slopes, at an altitude of 1,400 metres, in just 10 minutes, making Saint-Gervais Mont-Blanc one of the few ski resorts offering direct gondola access from major French and European rail routes.



**2024**

Year of construction



**807 metres**

Lower station



**1,404 metres**

Upper station



**2,800**

Passenger flow (people/hour)



**10 people**

Cabin capacity



**71**

Number of cabins



**6 minutes**

Approximate journey duration

Scheduled to open in December

**OFFICIAL OPENING EARLY 2025**







Head up the mountain towards

# LE BETTEX



## SNOWSHOEING, OFF THE BEATEN TRACK!

Looking for adventure? **The Compagnie des Guides in Saint-Gervais** proposes a **variety of snowshoe hikes** off the beaten track, across spectacular snow-covered landscapes. Enjoy a choice of themed outings in the company of **passionate mountain leaders** - the ideal way to discover local stories or the secrets of winter wildlife. Other outings are also scheduled in Saint-Gervais and Saint-Nicolas de Véroce. Private groups possible.

**Reservations compulsory** by 5.00 pm at the latest, the day prior to your outing. Limited number of participants.



FOR MORE INFORMATION, CLICK HERE



## SUMMITS TO CONQUER, MOMENTS TO REMEMBER!

Spend a morning or afternoon **discovering the joys of ski touring**. Enjoy breathtaking scenery and a gentle cardio workout. Saint-Gervais boasts several signposted ski-touring routes, including one that links **Le Bettex to the mountain pastures known as Sous les Freddy's**. Running between the forest and the slopes, this trail begins gently before demanding a little more effort as you skin-up towards the Monts Rosset chairlift.



Duration uphill  
**1 hour 15 minutes**



Difficulty  
**Novice  
Intermediate**



Elevation  
**+370 metres**



FOR MORE INFORMATION, CLICK HERE



### SNOWSHOE PROGRAMME:

- **Sunday:** 1.30 pm /4.30 pm > Relaxation
- **Tuesday:** 1.30 pm /4.30 pm > Photo theme
- **Wednesday:** 9.00 am /12.00 noon > Yoga (3<sup>rd</sup> January only)  
1.30 pm /4.30 pm > Glacier theme
- **Thursday:** 9.00 am /12.00 noon > Yoga (28<sup>th</sup> December only)  
6.30 pm /8.30 pm > Croq'raquettes - snowshoeing & snack
- **Friday:** 1.30 pm /4.30 pm > Relaxation
- **Saturday:** 1.30 pm /4.30 pm > Nature theme

18<sup>TH</sup> AND 19<sup>TH</sup> JANUARY 2025



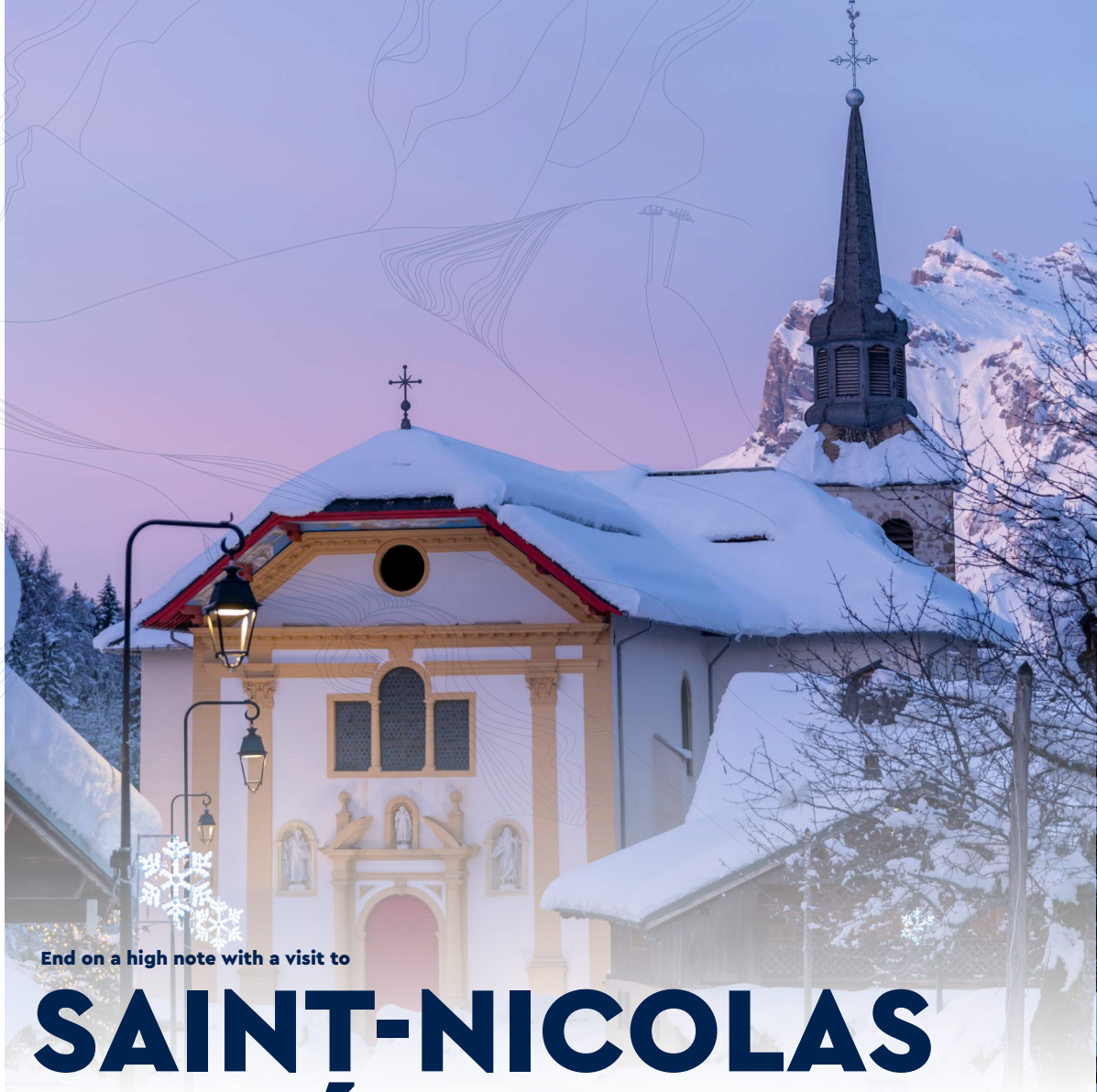
## A WEEKEND OF DISCOVERY

**The White Weekend** is the ideal opportunity to discover what's on offer in resort. Choose from more than **thirty free activities** on the slopes of Saint-Gervais, including an introduction to ski touring, freeride skiing, biathlon, snow grooming and snow yoga. Great entertainment for young and old alike!



FOR MORE INFORMATION, CLICK HERE





End on a high note with a visit to

# SAINT-NICOLAS DE VÉROCE

## FOR THE BOOKS...

The duo in the kitchen, Fabien Laprée and Gauthier Chaffard, combine award-winning gastronomy with precision pastry-making! Fabien, a finalist in the MOF awards in 2018, was trained by some of the great names in French cuisine. Gauthier, a former watchmaker, has transposed his love of precision to pastry. Together, they propose a unique, refined culinary experience.



FOR MORE  
INFORMATION,  
CLICK HERE

## A TREAT FOR THE TASTE BUDS...



Located just stone's throw from the Hotel Armancette, the restaurant **Le Mont Joly** serves **traditional family cuisine with alpine flavours**. A large terrace boasts spectacular panoramic views, from the Dômes de Miage to Mont Vorassay. Accessible to visitors with reduced mobility, Le Mont Joly is the **ideal place to enjoy an authentic mountain meal**.

Committed to a sustainable approach, the restaurant Le Mont Joly **favours local produce from short circuit suppliers** and refuses to serve single-use plastic, preferring filtered water in glass bottles.

During school holiday periods, from 21<sup>st</sup> December 2024 onwards, the bistro boasts **live music** every evening from 6.00 pm to 9.00 pm. An invitation to share the flavours of the Alps in a warm, musical atmosphere.

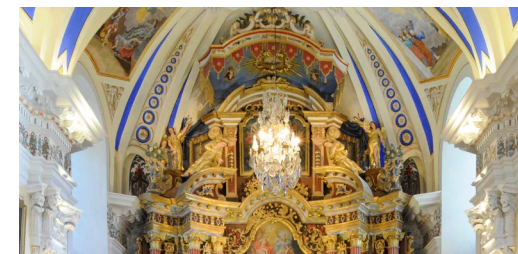


## A FEAST FOR THE EYES...

The church of **Saint-Nicolas de Véroce** is a true jewel of Alpine Baroque Art. A discreet facade hides an interior bursting with colour, gilding and cherubs. Famous for the magnificent blue (bleu de Saint-Nicolas) that adorns the 19<sup>th</sup> century vaults, the church in Saint-Nicolas de Véroce is an **absolute must see!**

Open every day from 9.00 am to 6.00 pm.

- 🕒 **Guided tours:** at 3.00 pm on Fridays during school holiday periods.
- 🕒 **Themed tours:** on request (depending on the weekly programme).



## MUSEUM OF SACRED ART

The former presbytery in Saint-Nicolas de Véroce houses a trove of **artistic and historical treasures:** gold and silverware, sculptures, paintings and a fascinating insight into the history of the village and its peddling traditions.

Exhibition on site, from 21<sup>st</sup> June 2024 to 4<sup>th</sup> May 2025:  
**Life in Northern Savoy from the 16<sup>th</sup> to 18<sup>th</sup> century.**

Exhibits from regional archives, the town council and other institutions.



NEW

### EASY AND ECO-FRIENDLY, THE PERFECT COMBINATION!

Our eco-friendly Facibus service runs on clean energy. Plus, each vehicle is equipped with a passenger information system displaying ski lift openings, events and other practical information.

Since September 2024:

- **line 2** : Saint-Gervais <> Les Pratz Sporting Club
- **line 4** : Saint-Gervais <> Saint-Nicolas de Véroce

have become 2 regular year-round shuttle bus services, providing easy access to and from activities in resort such as the swimming pool, the ski slopes and the Mont-Blanc Tramway.

🕒 Year-round bus service, 7 days a week, from 7.00 am to 8.00 pm.



#### WHEN GEOLOCATION MAKES LIFE EASIER:

1. Download the Saint-Gervais Mont-Blanc mobile application
2. Select the required bus route to find the nearest stop and the next available bus
3. Follow the bus in real time on the map

FOR MORE  
INFORMATION,  
CLICK HERE



**esf**  
SAINT-NICOLAS  
DE VÉROCE

#### MASTER THE SLOPES...

At the **ESF French Ski School in Saint-Nicolas de Véroce**, 24 instructors welcome every age of skier in an exceptional alpine setting! Expert tuition and breathtaking views add to the magic of skiing!

#### PRACTICAL INFORMATION

- 🕒 **School holidays:** group lessons from Sunday to Friday and every Saturday from January to March (including February half-term). Timetables vary according to the level of skiing.
- 🕒 **Outside school holidays:** group lessons from 10.00 am to 12.00 noon, Sunday to Friday and every Saturday, from January to March.

FOR MORE  
INFORMATION,  
CLICK HERE

# NOUVELLE SWIFT HYBRID



DISPONIBLE EN 4 ROUES MOTRICES



Pour les trajets courts, privilégiez la marche ou le vélo #SeDéplacerMoinsPolluer

Partenaire officiel de  
Saint-Gervais-Mont-Blanc



SUZUKI SALLANCHES

SUZUKI THONON-LES-BAINS

mobile.jeanlain.com/suzuki

NEW  
RESORT  
SKI

# MATA<sup>Ti</sup>



## THE NEXT-GEN CARVER



ELEVATE  
YOUR SENSATIONS





Sustainable tourism development  
in alpine areas.



A resort in favour of cycling.



The guarantee of a friendly welcome  
and quality services for cyclists.



Certification of the quality  
of service provided by the Tourist  
Office: reception, promotion and  
communication.



Working to improve tourist activities  
and customer satisfaction.



The highest recognition  
in the ranking of tourist resorts.



#### BY TRAIN

SNCF Train Station  
in Saint-Gervais Le Fayet.  
/ TGV direct from Paris: 5 hours 45 minutes.  
/ Direct train from Geneva  
(L3 Léman Express): 1 hour 45 minutes.  
/ Train from Annecy: 1 hour 30 minutes.

#### BY ROAD

A40, exit 21 → Le Fayet.  
The centre of Saint-Gervais  
is only 6 km from the motorway exit.  
/ Geneva: 1 hour / Annecy: 1 hour 10 minutes.  
/ Lyon: 2 hours 30 mins / Paris: 5 hours 30 minutes.

#### BY BUS

From Annecy, Bellegarde or Geneva.

#### BY PLANE

/ From Geneva Airport: 1 hour.  
/ From Lyon Airport : 2 hours.



@saintgervaismontblanc



@saintgervais\_montblanc  
#saintgervais



@saint\_gervais



Saint-Gervais Mont-Blanc

### SAINT-GERVAIS TOURIST INFORMATION OFFICE

43 rue du Mont-Blanc, 74170 Saint-Gervais-les-Bains

+33 (0)4 50 47 76 08

[www.saintgervais.com](http://www.saintgervais.com)

### PRESS OFFICER

**Avelaine SALLES**

+33 (0)6 73 68 80 94 | +33 (0)4 50 47 77 81

[presse@saintgervais.com](mailto:presse@saintgervais.com)